

Firestop Compound

Firestop solution for large voids in floors and walls

As part of the comprehensive Firepro range of fire protection products, Rockwool Corofil Firestop Compound is used to provide a fire rated seal around service penetrations in fire rated walls and floors.

Tested to BS476 Part 20, Firestop Compound provides up to 6 hours fire protection.

Advantages

- Smoke seal
- Good acoustic insulation
- Suitable for making good around most types of service penetrations
- Load bearing
- Simple installation
- No smoke emission
- Maintenance free
- Unaffected by humidity
- Available within 48 hours of order

Description

Firestop Compound is a specially formulated gypsum based compound, which is mixed with water to be trowelled or poured around service penetrations.

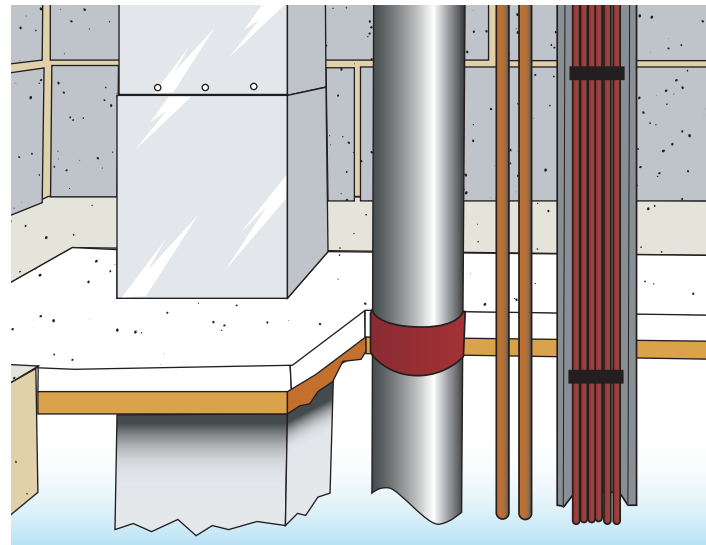
Installation Instructions

In floors, Rockwool Corofil permanent shutter panel (50mm) is cut and friction fitted between services and the edges of the floor slab. Firestop Compound is then trowelled over the shutter to a depth of 25mm thick.* This is allowed to cure. The Firestop Compound is then mixed to a pouring grade and tops the seal up to the required depth.

Floor Openings

Pouring:

- 1) 1 bag of compound to 12 litres water (2.5:1).
- 2) Set the shuttering into the opening ensuring a tight fit so that once the required depth of Compound is installed it finishes flush with the floor slab/screed unless otherwise specified.
- 3) Mix and pour compound until the required thickness is achieved.



Firestop Compound poured onto permanent stonewool fibre shutter in floor

Reinforcement

Reinforcing requires 12mm diameter bars placed at a maximum of 200mm centres across the short span only. The bars may be either recessed into the surrounding structure by minimum 50mm on both sides or supported on an angle securely fixed to the structure, all positioned approximately 30mm above the bottom surface of the compound to ensure adequate fire protection from below.

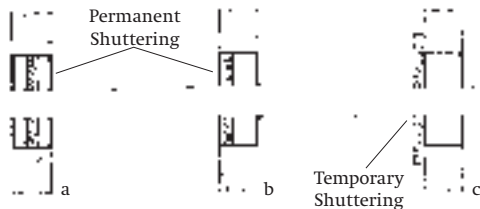
Existing compound installations can be easily drilled or sawn to allow the provision of additional or replacement services and subsequently re-sealed. Recommended minimum clearance between services and surrounding structure – 50mm or half the diameter, whichever is greater.

Wall Openings

In walls, Firestop Compound is mixed into a stiff consistency for trowelling into openings.*

Trowelling:

- 1) A bag of compound to 10 litres water (3:1). Guide only. Vary to suit site conditions.
- 2) Apply compound as specified, see sketches a, b or c.
- 3) Trowel the compound, starting at the base of the opening ensuring the correct thickness of material is installed. Work progressively towards the top of the opening until the barrier is complete. If shuttering panel is set at the centre, repeat process on other side.



Firestop Compound sets in 30-45 minutes and is capable of accommodating light foot traffic in approximately 72 hours.

*Plastic pipework must be protected with either Rockwool Corofil Firestop Pipe Collars or Intumescent Pipe Wraps. (See data sheets)

Performance and properties

Fire Rating

Fire Rating	Blockwork wall	Concrete Floor	Loadbearing Fire Seals [†]
1 Hour	75mm/2 @ 40mm	75mm	Up to 500mm × 500mm
2 Hours	75mm/2 @ 40mm	75mm	Clear of Services
3 Hours	100mm/2 @ 50mm	100mm	Up to 750mm × 750mm
4 Hours	100mm/2 @ 50mm	100mm	Clear of Services

[†]If clear areas are larger than above, reinforcement bars must be used

Acoustic Performance

Thickness of Compound	Weighted Sound Reduction Index (Rw)
75mm	39db
100mm	46db
150mm	51db

Coverage of Compound

Thickness of Compound	Number of Bags/m ²
75mm	2.2
100mm	3.3
150mm	4.4

These are approximate calculations based on 22kg bags. The coverage does not take into account the percentage of the hole filled with services.

Load Bearing Fire Seals (light foot traffic only)

Thickness of Compound	Max. Load Bearing Area
75mm	Free of Services
100mm	500 × 500mm
150mm	750 × 750mm

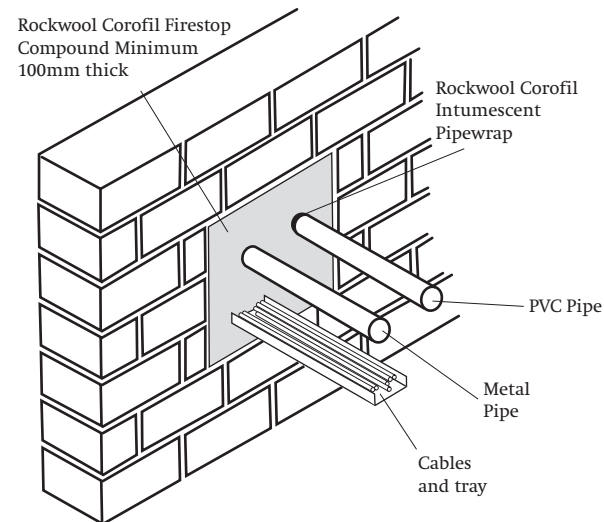
Openings larger than 750mm × 750mm clear area need to be reinforced. Please see overleaf or contact our technical department for details.

Specification

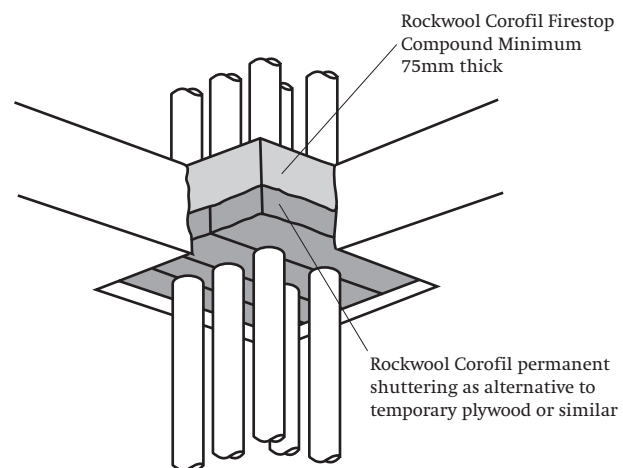
Install Rockwool Corofil Firestop Compound to provide 1,2,3 or 4 hour fire rating to all service penetrations through all fire rated walls and floors. Installation to be fully in accordance with manufacturer's instructions.

Installation Drawings

Firestopping at wall penetrations



Firestopping at floor penetrations



WILHAMS

Wilhams Insulation Far East Sdn Bhd (340166M)
 15 & 17 Jalan U5/23, Seksyen U5
 Mah Sing Integrated Industrial Park
 40150 Shah Alam, Selangor Darul Ehsan, Malaysia
 Tel: 603-7846 6728 Fax: 603-7846 6540
 E-mail: wilhams@wilhams.com.my