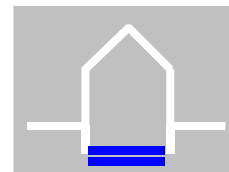
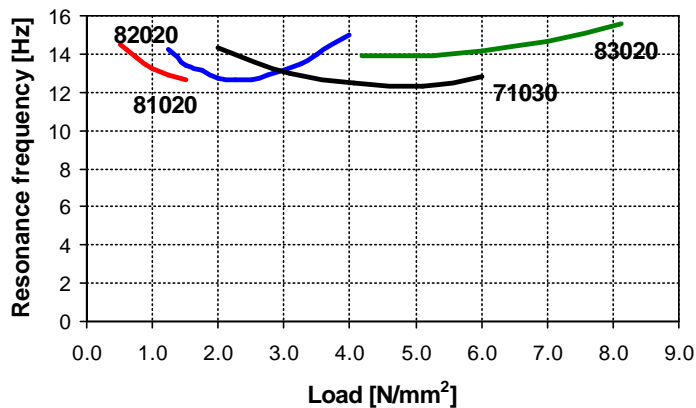
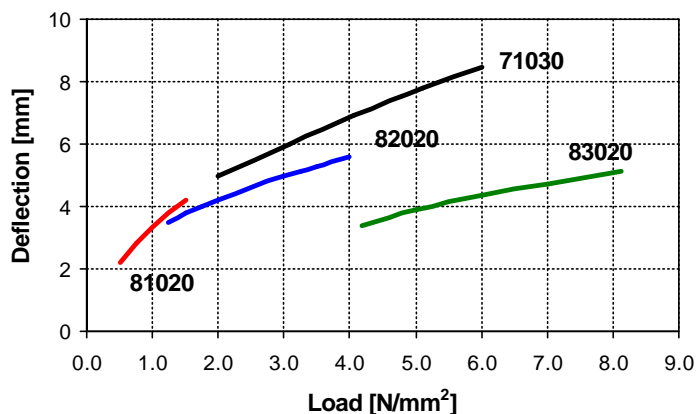
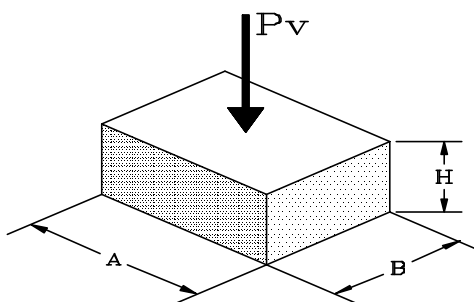


CDM SIMPLE BEARINGS



CDM-ISO-STRUCTURE

Type		81020	82020	71030	83020
Constitution		NR	NR	CR/HPL	NR + Kevlar
Static load range	[N/mm ²]	0.4 - 1.2	1.5 - 4.0	2.0 - 5.0	4.0 - 8.0
Maximum total load	[N/mm ²]	1.5	5.5	10.0	10.0
Creep rate	[%/Dec.]	0.5 (1.0 N/mm ²)	0.7 (3.0 N/mm ²)	0.7 (4.5 N/mm ²)	0.6 (5.0 N/mm ²)
Density	[kg/m ³]	1000 - 1100	980 - 1030	1122-1200	1050-1150
Colour		Brown	Green	Black	Black
Pad dimensions	[mm]	A=100, B=100, H=20 (30 for 71030)			

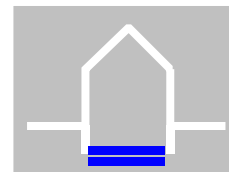


CDM SIMPLE BEARINGS 13-15 Hz



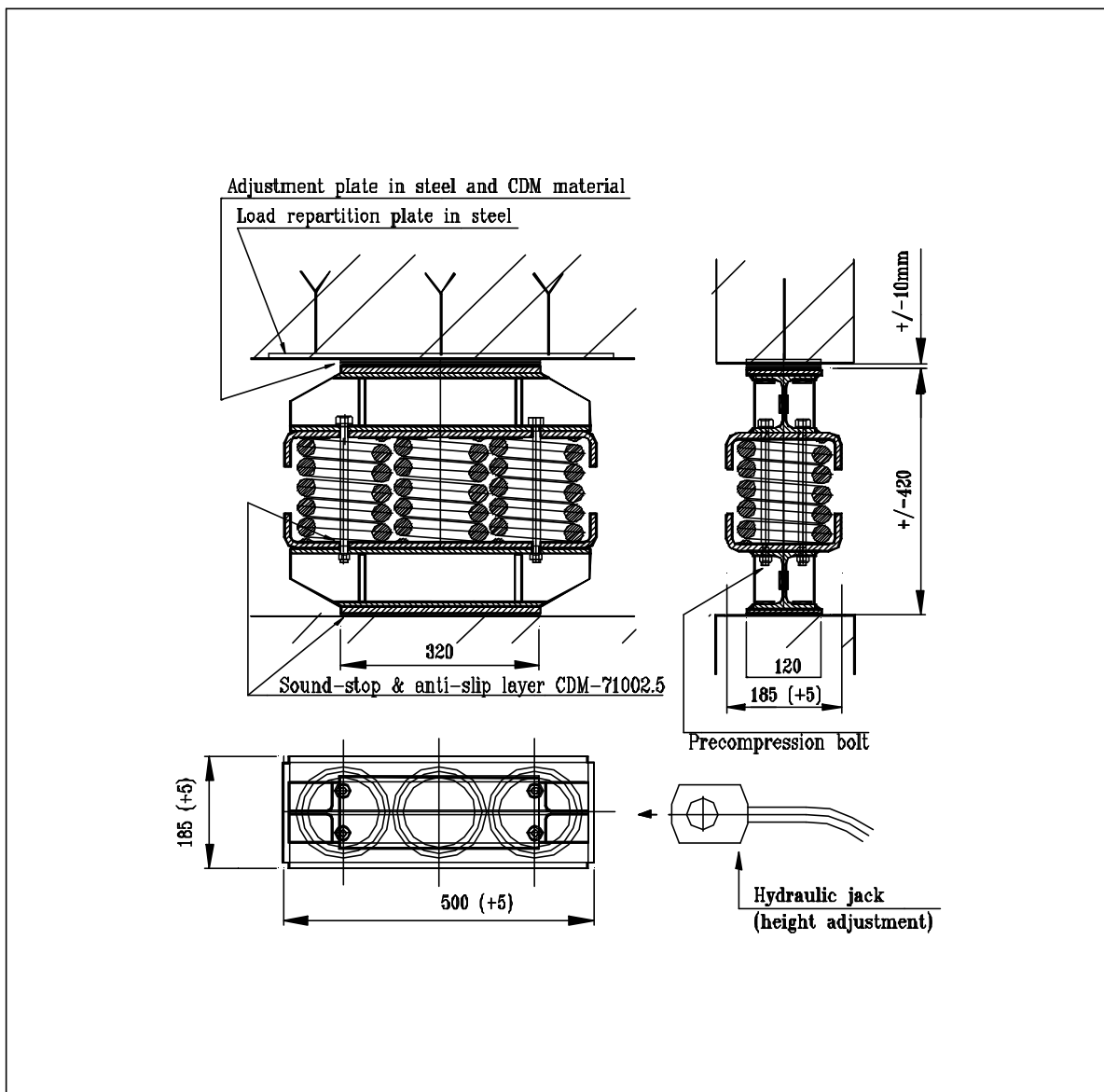
Product sheet

CDM-CHR/B3



CDM-ISO-STRUCTURE

CDM-CHR/B3		Acoustic load G+Q/3 £ 270 kN	Maximum load G+Q 300 kN
Resonance frequency	[Hz]	ca. 3.5	ca. 3
Effective deflection of spring	[mm]	20	22
Deflection with precompression (80%G)	[mm]	14	14
Real deflection of the box	[mm]	ca. 8	ca. 10
Tolerances on height of box	[mm]	± 5	

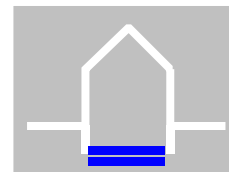


CDM PRECOMPRESSED BEARING CHR/B3



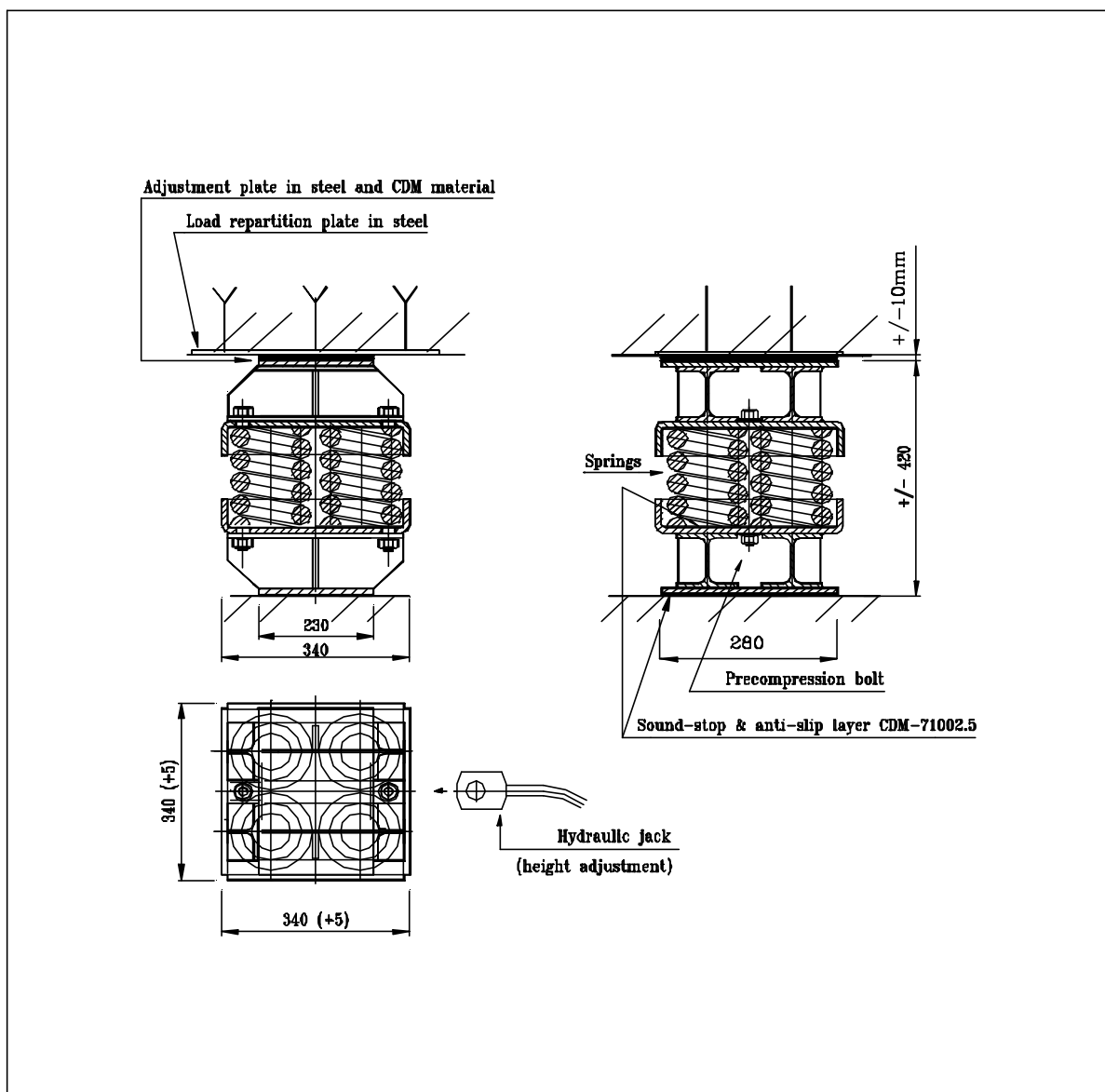
Product sheet

CDM-CHR/B4



CDM-ISO-STRUCTURE

CDM-CHR/B4		Acoustic load G+Q/3 270 - 370 kN	Maximum load G+Q 400 kN
Resonance frequency	[Hz]	ca. 3.5	ca. 3
Effective deflection of spring	[mm]	20	22
Deflection with precompression (80%G)	[mm]	14	14
Real deflection of the box	[mm]	ca. 8	ca. 10
Tolerances on height of box	[mm]	± 5	

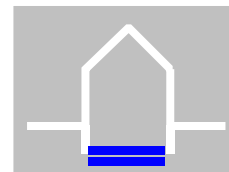


CDM PRECOMPRESSED BEARING CHR/B4



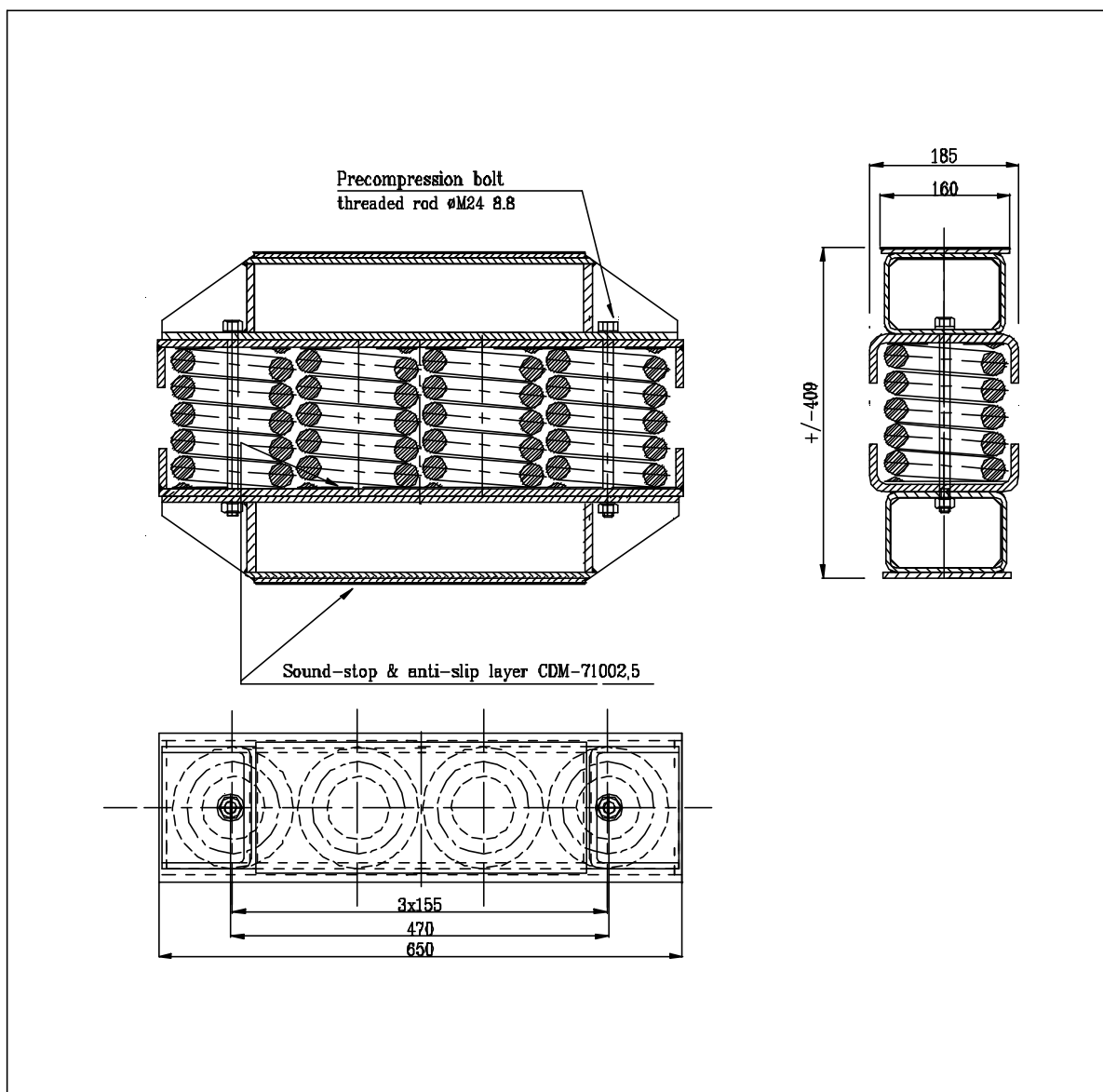
Product sheet

CDM-CHR/B4L



CDM-ISO-STRUCTURE

CDM-CHR/B4L		Acoustic load G+Q/3 270 - 370 kN	Maximum load G+Q 400 kN
Resonance frequency	[Hz]	ca. 3.5	ca. 3
Effective deflection of spring	[mm]	20	22
Deflection with precompression (80%G)	[mm]	14	14
Real deflection of the box	[mm]	ca. 8	ca. 10
Tolerances on height of box	[mm]	± 5	

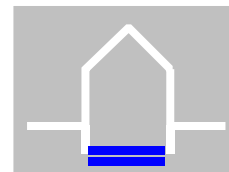


CDM PRECOMPRESSED BEARING CHR/B4L



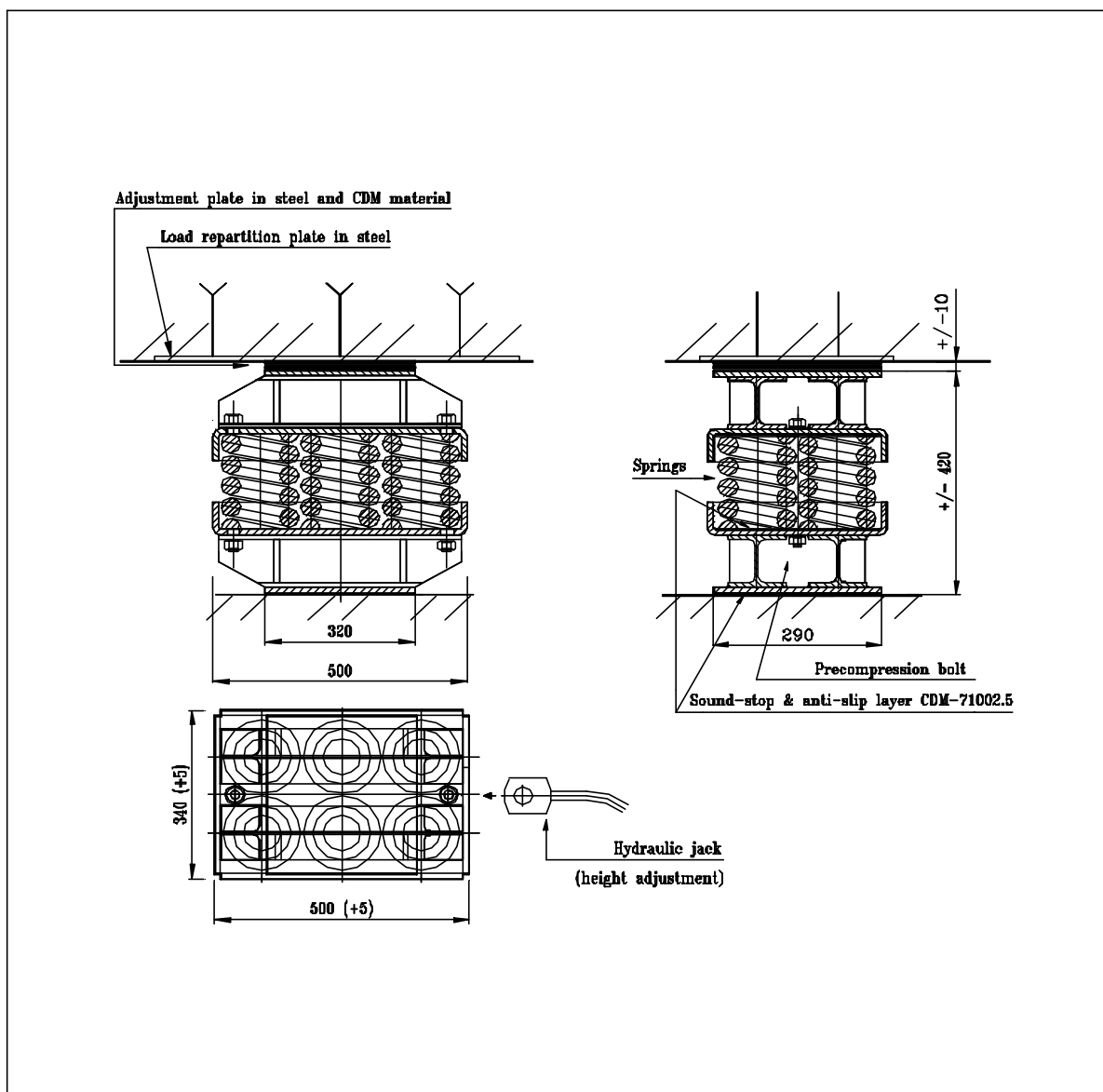
Product sheet

CDM-CHR/B6



CDM-ISO-STRUCTURE

CDM-CHR/B6		Acoustic load G+Q/3 370 - 550 kN	Maximum load G+Q 600 kN
Resonance frequency	[Hz]	ca. 3.5	ca. 3
Effective deflection of spring	[mm]	20	22
Deflection with precompression (80%G)	[mm]	14	14
Real deflection of the box	[mm]	ca. 8	ca. 10
Tolerances on height of box	[mm]	± 5	

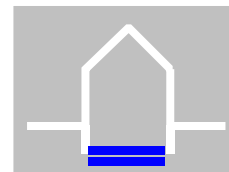


CDM PRECOMPRESSED BEARING CHR/B6



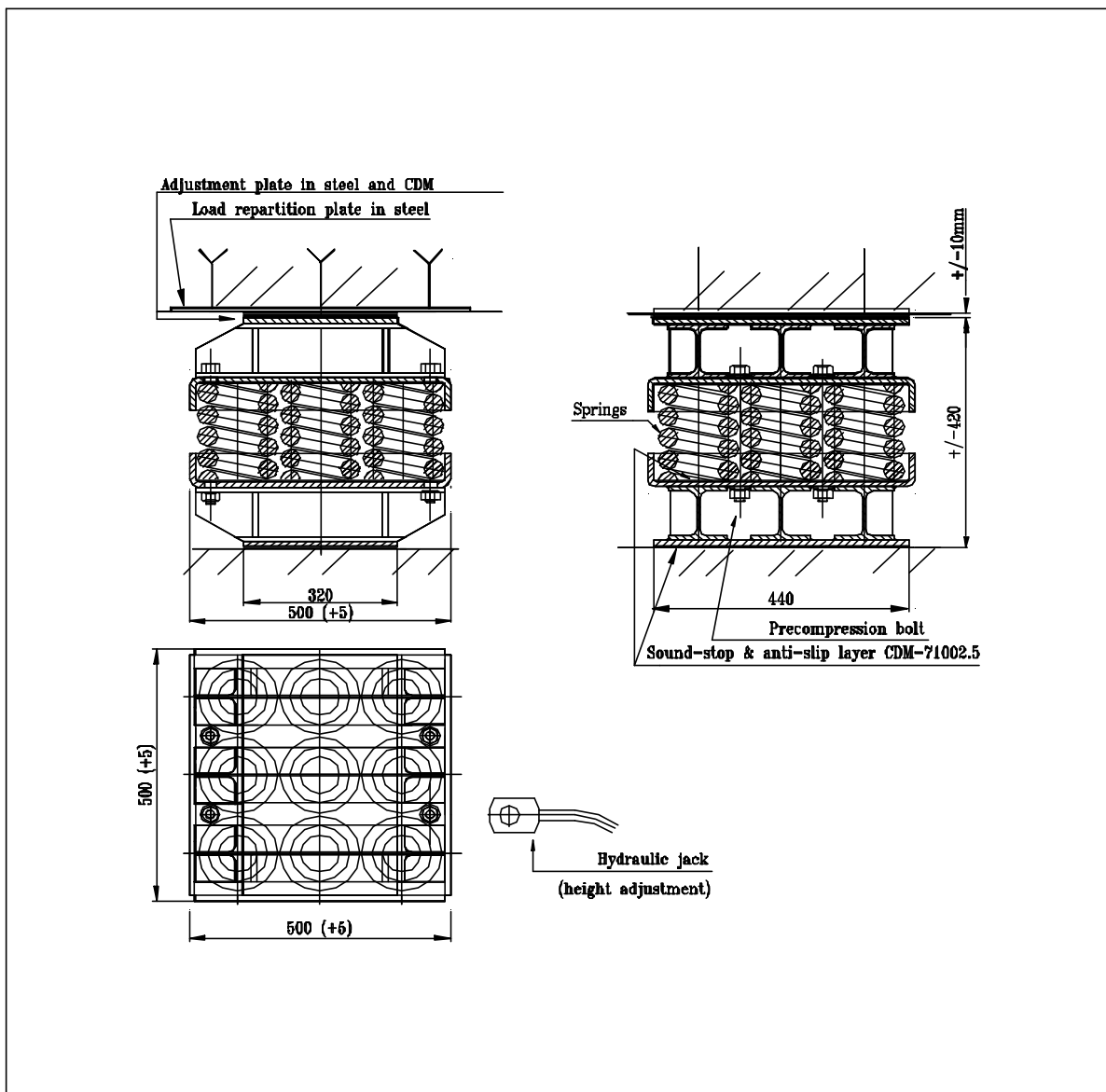
Product sheet

CDM-CHR/B9



CDM-ISO-STRUCTURE

CDM-CHR/B9		Acoustic load G+Q/3 550 - 800 kN	Maximim load G+Q 900 kN
Resonance frequency	[Hz]	ca. 3.5	ca. 3
Effective deflection of spring	[mm]	20	22
Deflection with precompression (80%G)	[mm]	14	14
Real deflection of the box	[mm]	ca. 8	ca. 10
Tolerances on height of box	[mm]	± 5	



CDM PRECOMPRESSED BEARING CHR/B9

