

Firesafe application type **Acoustic**Construction type **Floors****ROCKWOOL**  
F I R E S A F E I N S U L A T I O N

# Acoustic Floor System

To meet fire and acoustic requirements in conversions

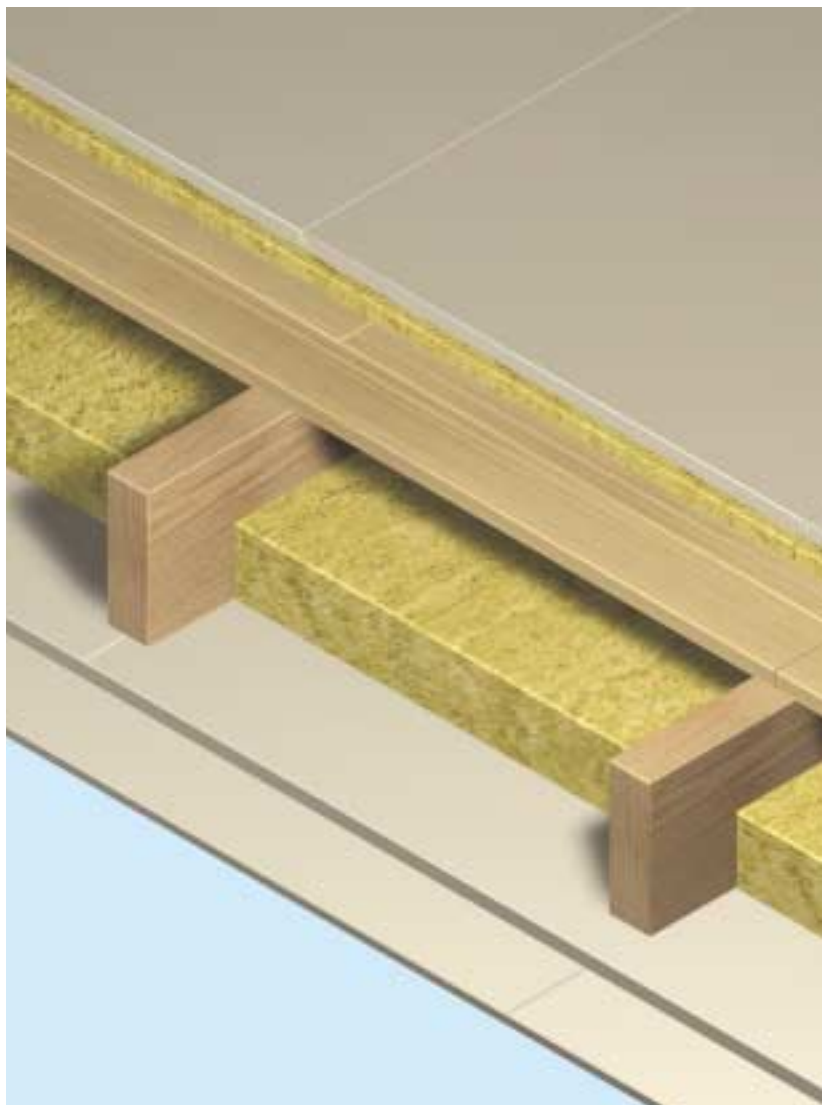
Rockwool Acoustic Floor System has been developed to provide acoustic insulation for intermediate floors, to meet the requirements of the National Building Regulations and Technical Standards, for conversion applications.

The system consists of high density mineral wool bonded to high density, tongued and grooved, cement particle board flooring.

The floor panels are easy to lay and will accommodate small irregularities of the sub-floor. The Rockwool Acoustic Floor System works on the 'floating floor' principle to isolate and absorb impact and airborne sound.

## Advantages

- High compressive strength
- Dimensionally stable
- Excellent acoustic insulation
- Will accommodate pipe runs and services



## Standards & approvals

Rockwool Insulation complies with the requirements of BS EN 13162: 2001 Thermal Insulation products for buildings Factory made mineral wool (MW) products specification.

### Moisture resistance

The panels are resistant to the effects of moisture and have excellent dimensional stability.

### Acoustic test results

	Airborne sound reduction (dB)	Impact sound reduction (dB)
New build requirement	52 (or greater)	61 (or greater)
Refurb. requirement	48 (or greater)	65 (or less)
Test No. L/2388/3	53	62

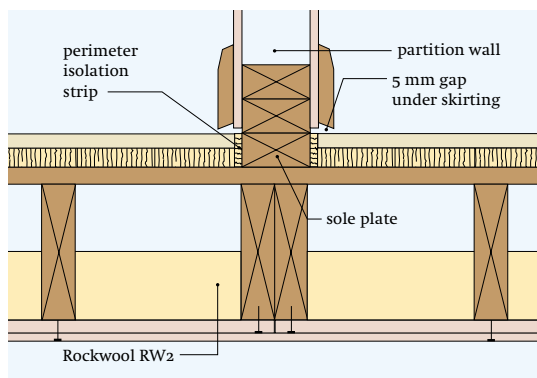
Tested to BS 2750: Part 6: 1980 and BS 5821: Part 2: 1984 on a timber joisted floor. These figures exceed the requirements of the National Building Regulations and Technical Standards for conversion applications.

## Design details

### Perimeters

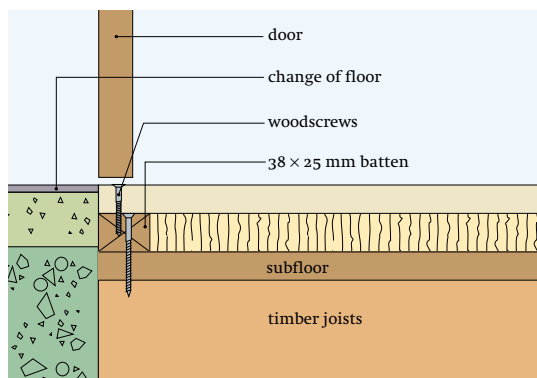
A minimum 10 mm gap must be left between the floating floor panels and all perimeter walls.

This gap should be packed with insulation off-cuts of 12 mm thick by 45 mm deep Rockwool Isolation Strips after installation of the floor system. A gap of at least 5 mm must be left between the bottom of any skirting and the floor finish.



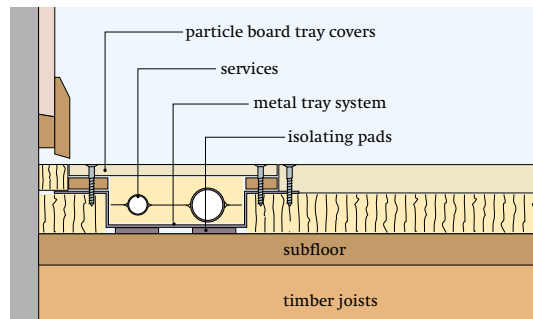
### Partitions, intermediate walls and heavy units

Partitions and intermediate walls should not be built directly off the floor panels, but from the timber deck, via a timber sole plate. Heavy items such as kitchen units, sanitary ware, baths etc. should also be directly supported off the sub-floor. The joist layout should cater for any unevenly distributed heavy loads.



### Thresholds

The floor panels must be reinforced locally to ensure alignment with thresholds and abutments to door openings, staircases etc. The insulation should be cut back and replaced by a 25 mm deep timber batten of minimum width 38 mm, which should be screwed to the sub-floor. The cement particle board overlap is then screwed to the batten with 38 mm No.8 wood screws, using pre-drilled, slightly countersunk holes at no closer than 15 mm from the edge of the panel.



### Service runs

In order to accommodate services, the insulation should be recessed to receive them, or the service runs should be incorporated into proprietary service ducts. Any Regulations or Bye-laws relating to the installation of services should be followed.

For access to piped services, the pipes should be laid in purpose made metal trays (see drawing above), which have particle board covers compatible with the floor panels. The trays are supplied with pre-bonded acoustic strips on the base, for isolation from the sub-floor. For details of this ducting system refer to JB Products (Midlands) Ltd.

Tel 01384 891216, or Fax 01384 892774.

## Work on site

### Cutting

The panels can be cut to size with conventional woodworking tools, using TCT or diamond blades. In order to obtain a positional guide for conduits within the floor thickness, first position the floor panel above the conduit and press down to leave an impression on the undersurface. A groove can then be cut from the Rockwool insulation with a sharp knife.

### Drilling

Use HSS or TCT drill bits. Percussion drills must *not* be used.

### Laying

The panels must be laid in a staggered pattern, starting from one corner of the room. All T&G joints must be glued with a PVA adhesive.

## Health and safety

A COSHH Data sheet is available from Rockwool's Marketing Services Department.

Current HSE 'CHIP' Regulations and EU Directive 97/69/EC confirm that Rockwool fibres are not classified as a possible carcinogen.

## Technical Helpline

Technical advice relating to Acoustic Floor System is available from the Rockwool Technical Helpline Services Department on 0871 222 1780.

Rockwool Limited reserves the right to alter or amend the specification of products without notice as our policy is one of constant improvement.

The information contained in this data sheet is believed to be correct at the date of publication. Whilst Rockwool will endeavour to keep its publications up to date, readers will appreciate that between publications there may be pertinent changes in the law, or other developments affecting the accuracy of the information contained in this data sheet.

The above applications do not necessarily represent an exhaustive list of applications for Acoustic Floor System. Rockwool Limited does not accept responsibility for the consequences of using Acoustic Floor System in applications different from those described above. Expert advice should be sought where such different applications are contemplated, or where the extent of any listed application is in doubt.

**WILHAMS**

Wilhams Insulation Far East Sdn Bhd (340166M)  
15 & 17 Jalan U5/23, Seksyen U5,  
Mah Sing Integrated Industrial Park  
40150 Shah Alam, Selangor Darul Ehsan, Malaysia  
Tel: 603-7846 6728 Fax: 603-7846 6540  
E-mail: wife@tm.net.my