

Firebatt 825

Insulation for high temperature applications

Rockwool Firebatt 825 is a non-combustible rock mineral wool slab engineered to provide highly effective thermal insulation in high temperature industrial, marine and offshore applications.

Advantages

- suitable for high temperature applications
- non-combustible
- easy to handle and install
- cost effective

Standards and approvals

Firebatt 825 is certified by Lloyd's Register of Shipping as a non-combustible material for use on:

- Fixed offshore installations
- MED classed ships – DTLR MCA approval

Firebatt 825 is rated non-combustible in accordance with IMO A.799, ISO 1182 and BS 476-4.

Applications

Thermal insulation of high temperature equipment, boilers, ovens, vessels and large diameter pipework.

Firebatt 825 is particularly suited to thermal insulation and acoustic treatment of marine and offshore installations.

Description

Dimensions

Standard size: 900 × 600 mm

Thicknesses: 25, 40, 50 and 75 mm

Other thicknesses are available to special order.



High temperature plant insulated using Rockwool Firebatt 825

Finishes

Firebatt 825 can be supplied with a factory applied reinforced aluminium foil facing. Where the foil is intended as a vapour barrier, suitable aluminium tape should be used to seal the joints between adjacent slabs and any perforations made by pins, etc.

Performance

General

For the composition, manufacture and physical properties of Rockwool mineral wool, refer to Rockwool Data Sheet 001 'Performance and properties'.

Compressive strength

Loadings (kg/m ²)	Percentage compression
100	3.9
500	10.9

Environment

No CFCs, HFCs or HCFCs are used in the manufacture of Rockwool materials.

Thermal conductivity

Mean temperature (°C)	λ values (W/mK)
50	0.037
100	0.044
150	0.053
200	0.062
250	0.073
300	0.086
350	0.100
400	0.116

Service temperatures

Firebatt 825 may be suitable for use at continuous operating temperatures of up to 800°C where no significant vibration is present.

Water resistance

Firebatt 825 repels water. Moisture condensing from the air within Firebatt 825 is less than 0.02% by volume at 95% RH.

Acoustics

The use of Firebatt 825 can considerably reduce the level of environmental sound.

Durability

Firebatt 825 will give effective protection for the lifetime of the building, plant or structure.

Thermal insulation of ovens

Firebatt 825 is positioned between the cladding rails in two layers, ensuring that all joints are staggered, and is held in position with lightweight banding. Finally, the cladding is placed over the insulation and secured to the cladding rails with self-tapping screws. (See Figures 1 and 2).

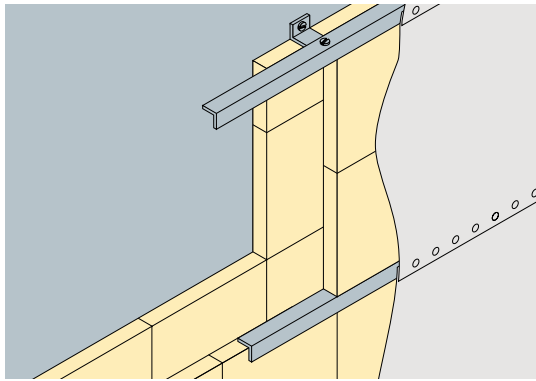


Figure 1 Insulation of ovens – typical detail

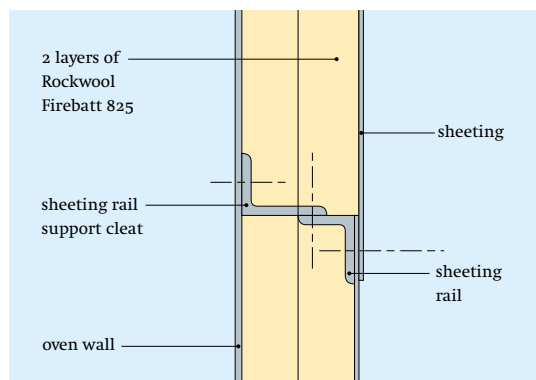


Figure 2 Oven insulation – vertical section

Work on site

Handling and storage

Firebatt 825 is light and easy to handle and fix. The slabs can be cut and shaped using a sharp knife.

Maintenance

Once installed, Firebatt 825 normally needs no maintenance.

Health and safety

A COSHH Data sheet is available from Rockwool's Marketing Services Department.

Current HSE 'CHIP' Regulations and EU Directive 97/69/EC confirm that Rockwool fibres are not classified as a possible carcinogen.

Technical Helpline

Technical advice is available from the Rockwool Industrial Helpline on 01656 868130.

Rockwool Limited reserves the right to alter or amend the specification of products without notice as our policy is one of constant improvement.

The information contained in this data sheet is believed to be correct at the date of publication. Whilst Rockwool will endeavour to keep its publications up to date, readers will appreciate that between publications there may be pertinent changes in the law, or other developments affecting the accuracy of the information contained in this data sheet.

The above applications do not necessarily represent an exhaustive list of applications for Firebatt 825. Rockwool Limited does not accept responsibility for the consequences of using Firebatt 825 in applications different from those described above. Expert advice should be sought where such different applications are contemplated, or where the extent of any listed application is in doubt.

WILHAMS

Wilhams Insulation Far East Sdn Bhd (340166M)

15 & 17 Jalan U5/23, Seksyen U5,
Mah Sing Integrated Industrial Park
40150 Shah Alam, Selangor Darul Ehsan, Malaysia
Tel: 603-7846 6728 Fax: 603-7846 6540
E-mail: wife@tm.net.my